

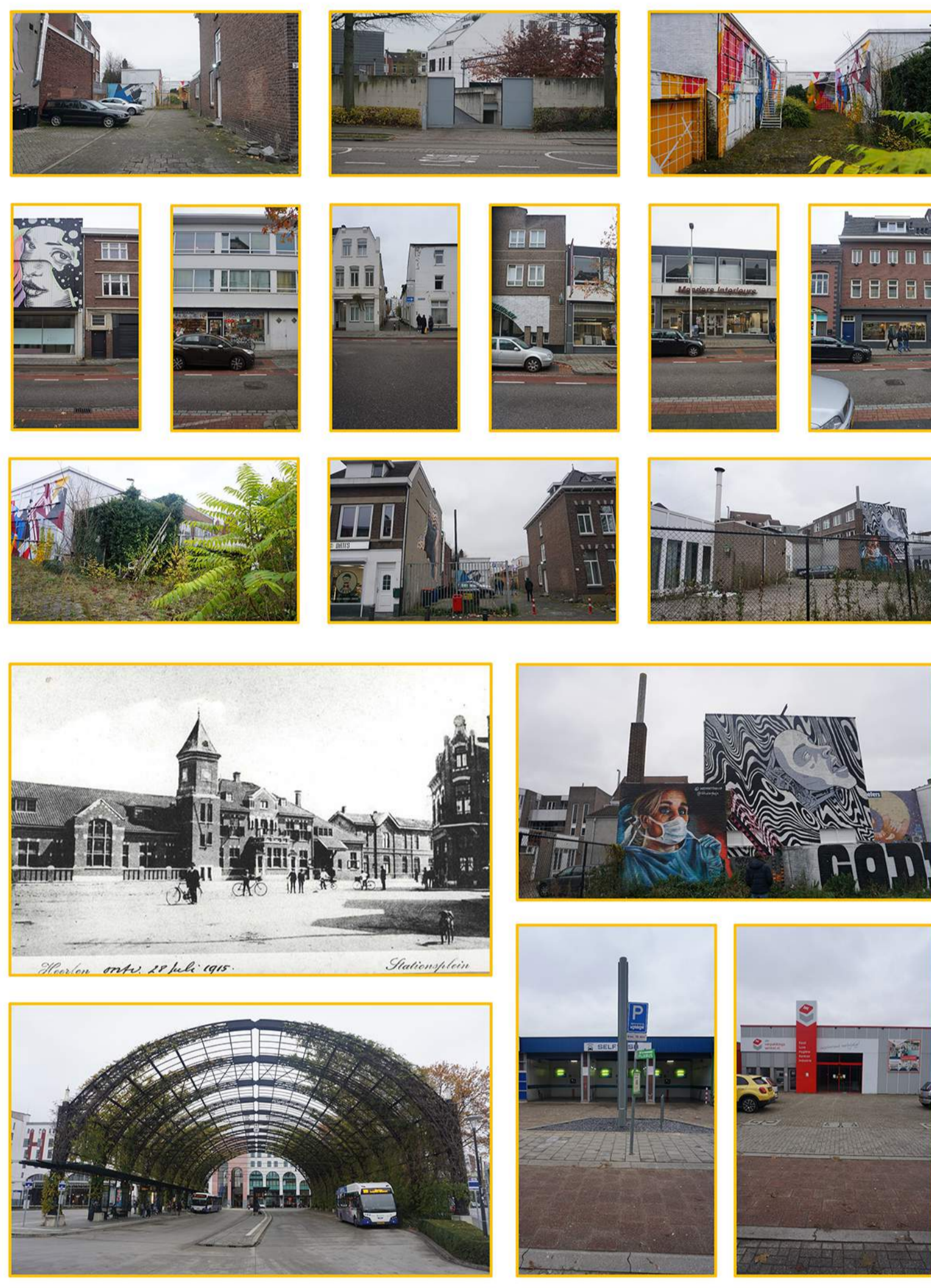
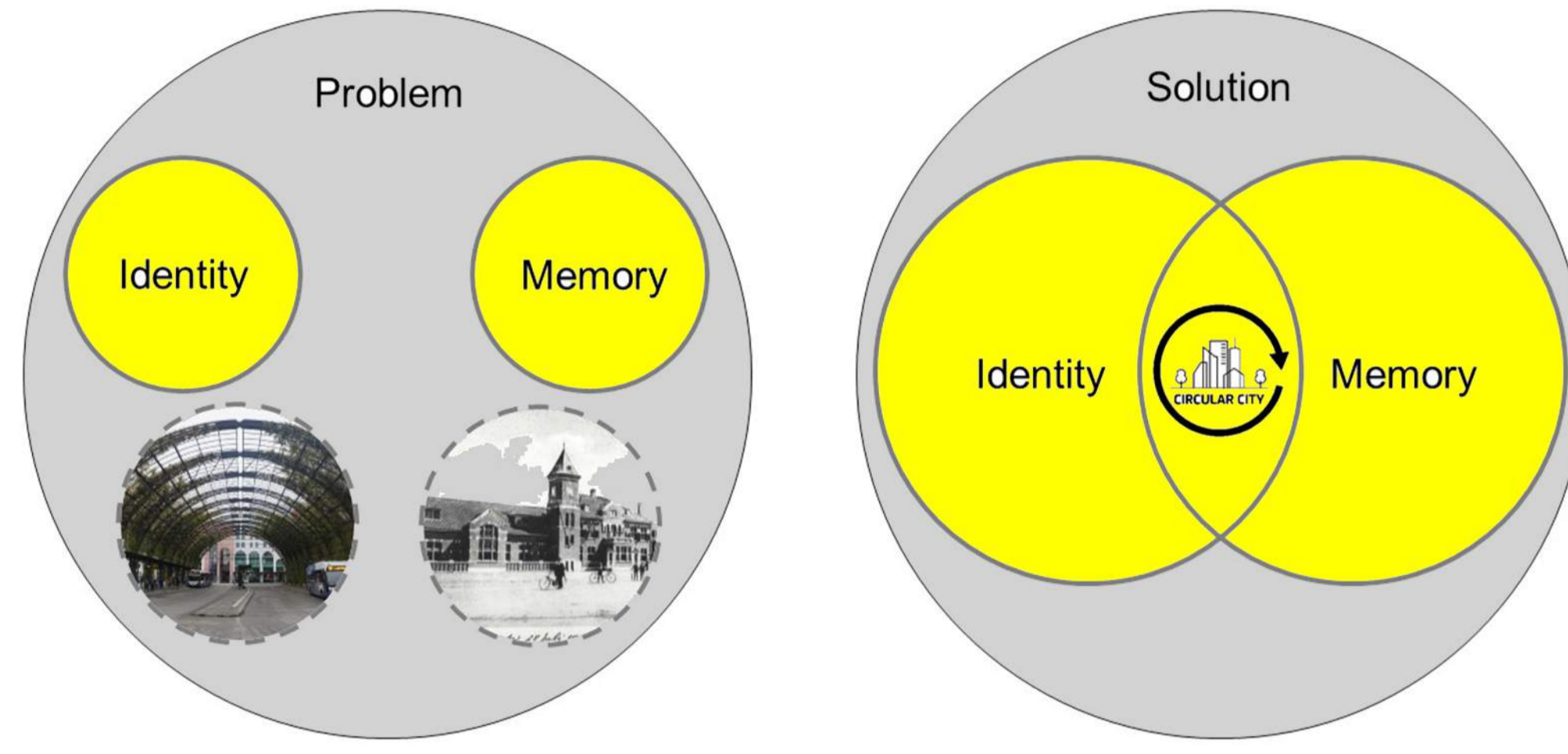
ANALYSIS / URBAN APPROACH

045, HEERLEN GMS (Hoppersgraaf)

Enhancement of the City's Memory

Revitalization of the current urban space through the enhancement of the City's **MEMORY**

Urban Approach and Memory for Identity
Plot as a chance to connect Heerlen



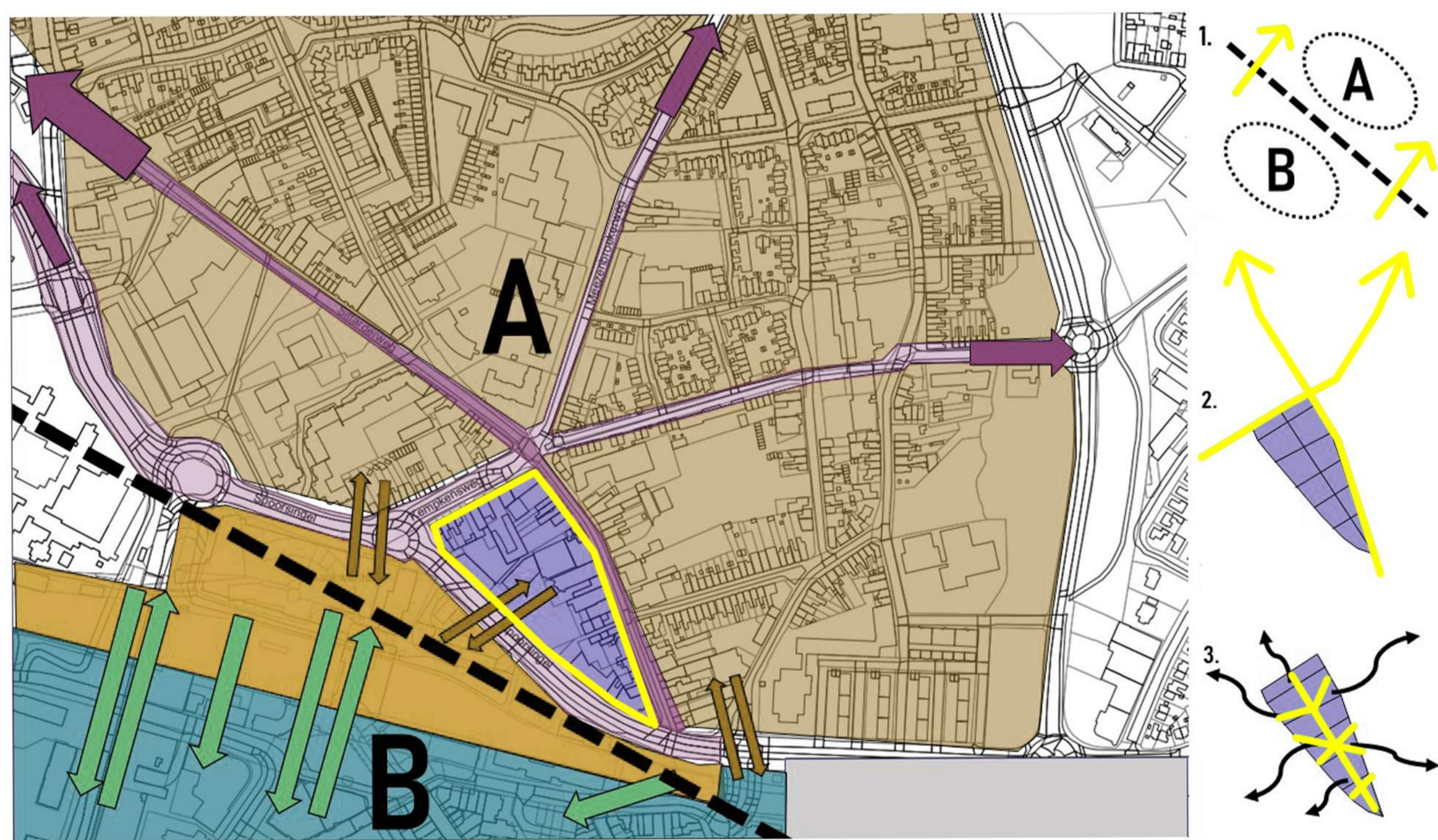
The History of the yellow canarie in heerlen

Looking at Heerlens mining history we started to look for little details of the past. Something recognizable, something every local knows. During the conversations about this topic the famous canarie came about. What does a canarie have to do with the mines you ask? Will working the miners had a couple of clever tricks to know if the working environment was safe. An example of this is the municipality planted certain trees that would make a loud noise if one of the mine tunnels was about to collapse. One of the other safety checks, the one we are so keen of is the yellow canarie. Miners would take down canaries to test out the air in the tunnels. Because a canarie is effected quiker by polluted air, the workers would use them as an indicator. They where used to see if the working conditions where good enough that day. Are plan is to bring back the history of the canarie. We will bring back the history of this bird by using its distinct color "yellow". By making Yellow the main color of are project we bring back history without making it to historical but more of an memorabilia.

THE MYTH IN THE WALL

There is an folk tale about the old walls of the city. According to the myth you can hear the mineworkers down under the ground. Footsteps pickaxes and conversations in Dutch, Italian and Polish. (if its possible put picture of the wall)

Programs and New Grid
New City Distribution



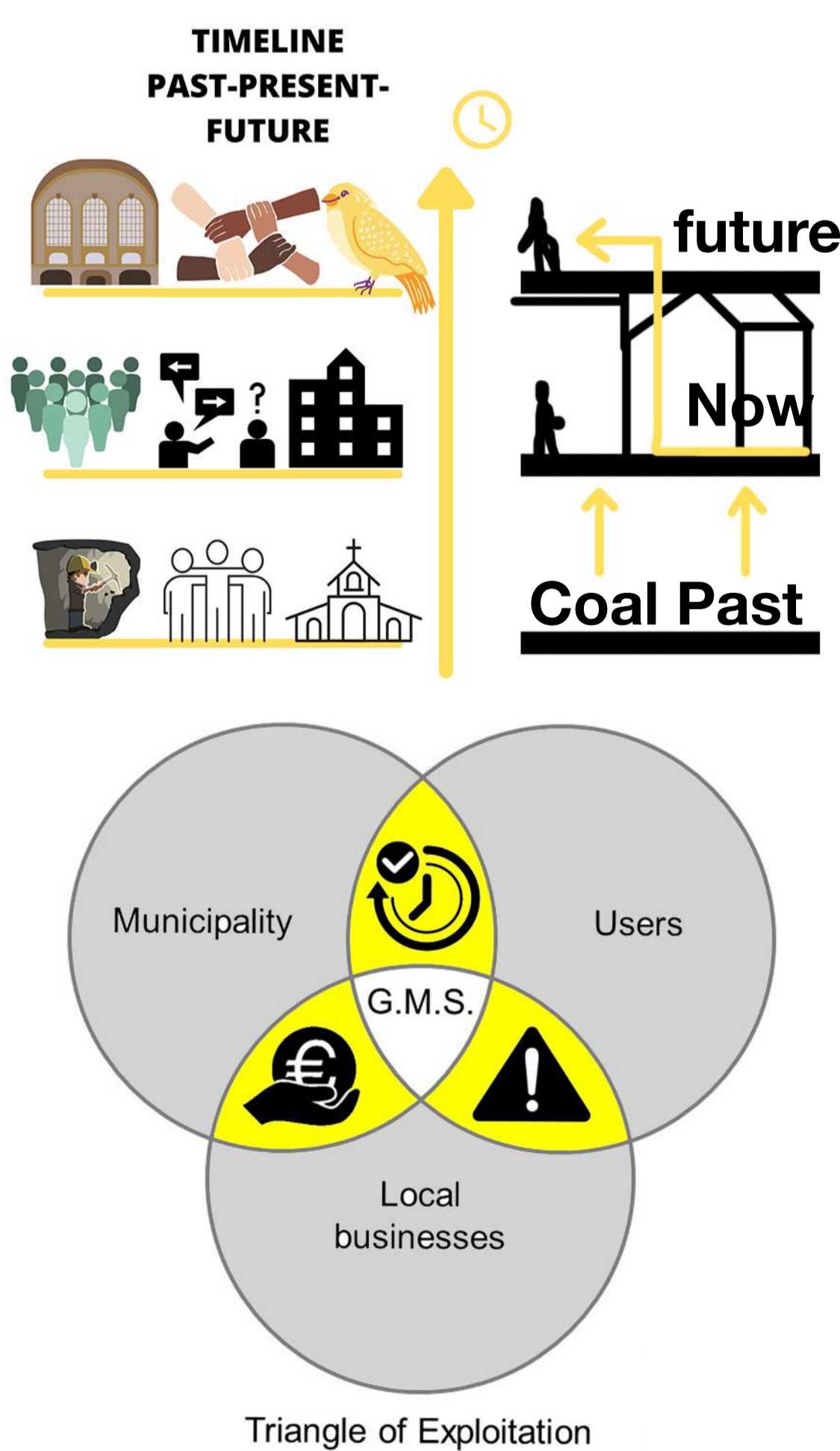
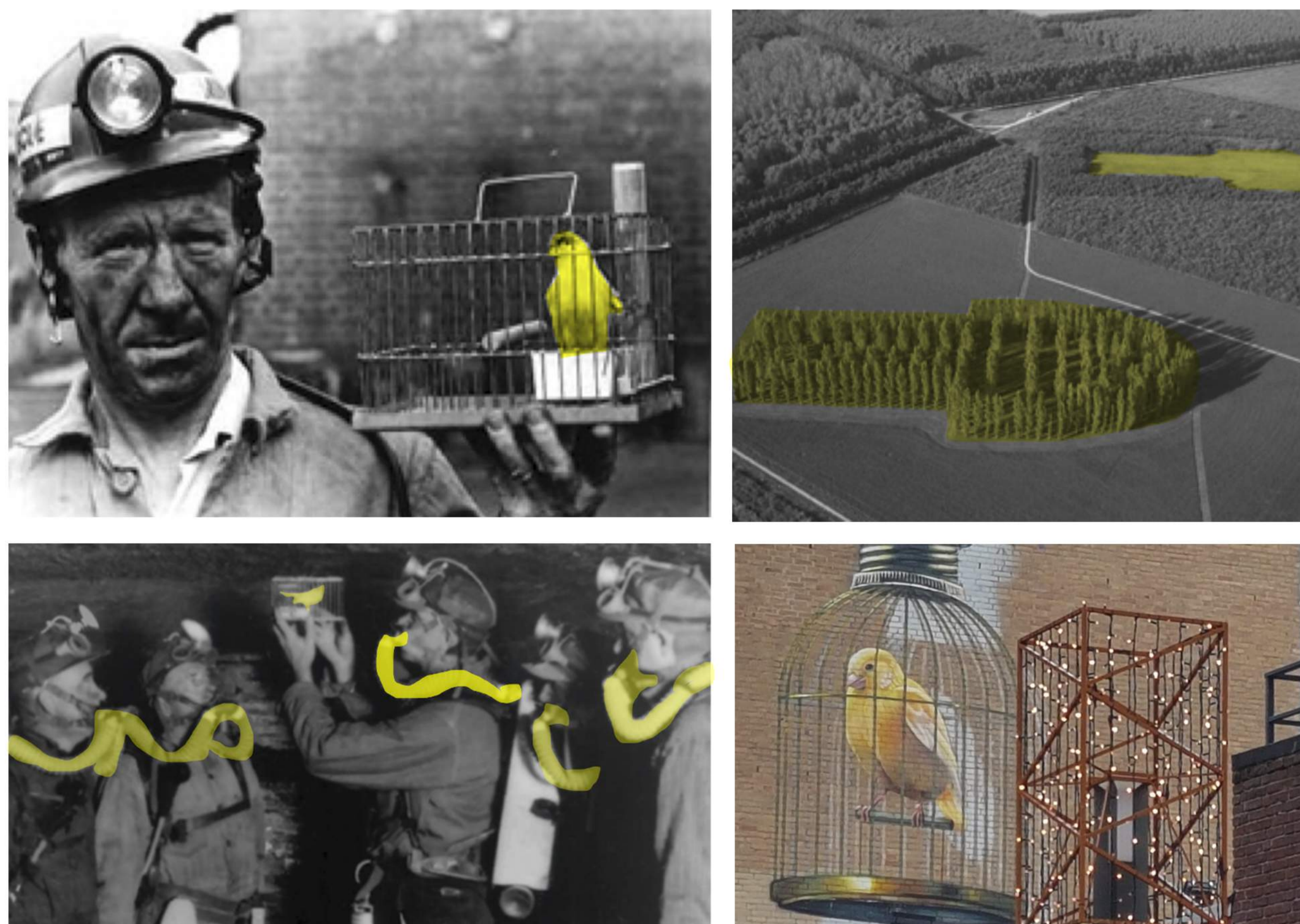
THE OLD STATION

To bring back the memory of Heerlen we looked at the old functions around the sight. We found out that the area started to prosper because of the train station across of the sight. By using the floorplan as an grid in the project we are trying to bring awareness of the past across of the new. The old train station right next to the new maankwartier. Because of the structure of the grid it is possible to change, adapt and work with the community over time to make it fit there wants and needs.

3- Cold War Berlin 1961

Former Berlin wall - Possible Berlin Wall memorial

"THEY SAY... THAT WHEN YOU APPROACH THE ANCIENT WALLS, YOU CAN HEAR THE ECHOES OF THE OLD MINES."
Anton ten Westenend



YELLOW LINE - MEMORY

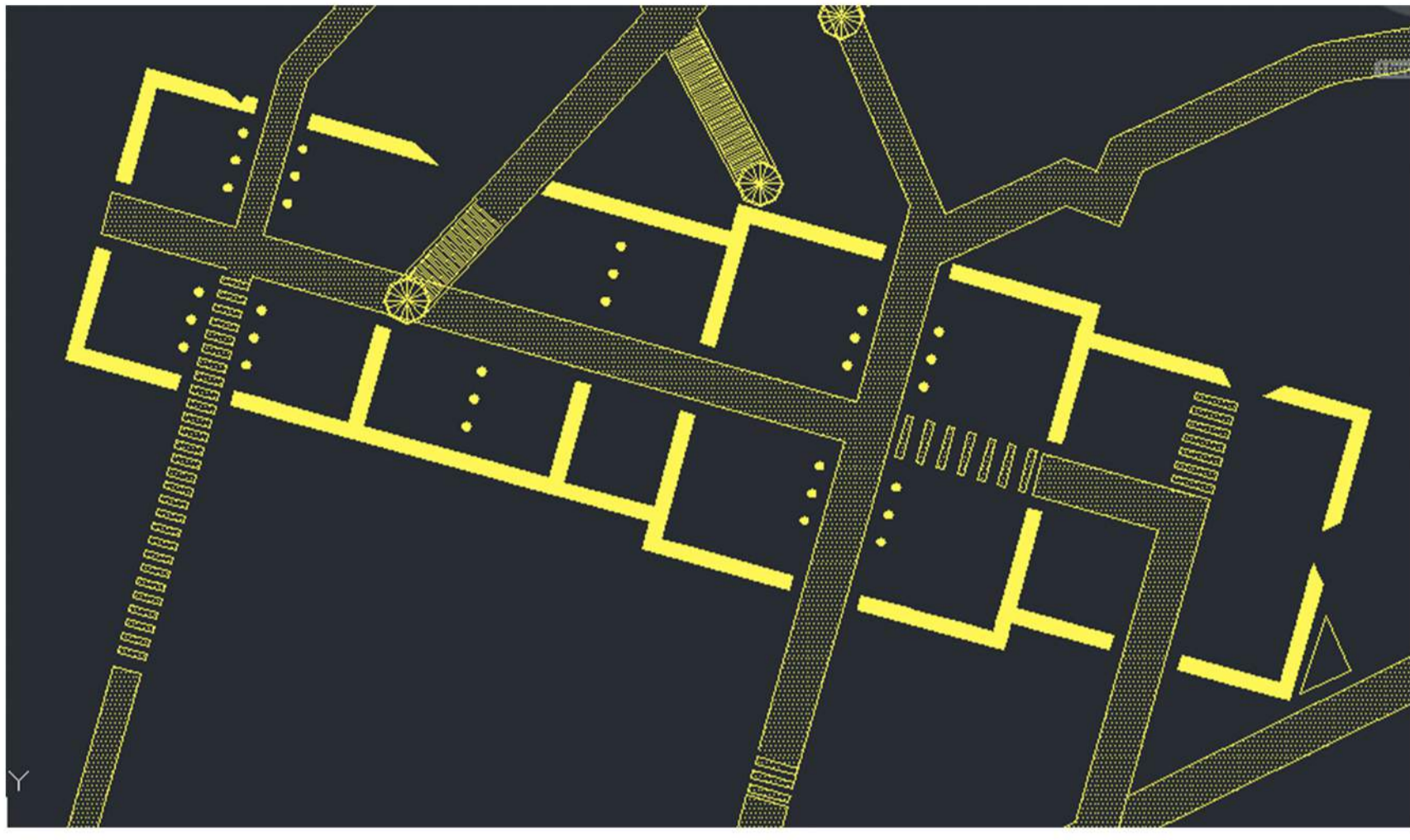
looking at the area we noticed there was little to no green spaces, especially no high quality green areas. Because of this we started looking at an urban heat map and noticed that Hoppersgraaf was dealing with a lot of heat stress. So we dicided that the locals deserved a high quality green space. Trying to fit this concept in the plan we decided to make it a part of the roof connection. A green roof fits in to the 2022 plans of the municipality, and with the climate adaptations plans of the EU. Locals will have there own hidden greenspace on top of the roof next to the sight. It can be seen as a hidden gem.

Project / Ecos From The Mines

045, HEERLEN GMS (Hoppersgraaf)

1- Overlay of the Old Station Floor Plan

Parallel to the New Station



2- Connection of neighborhood programs

Indoor Grid of the Plot



Initial installation

Face 1



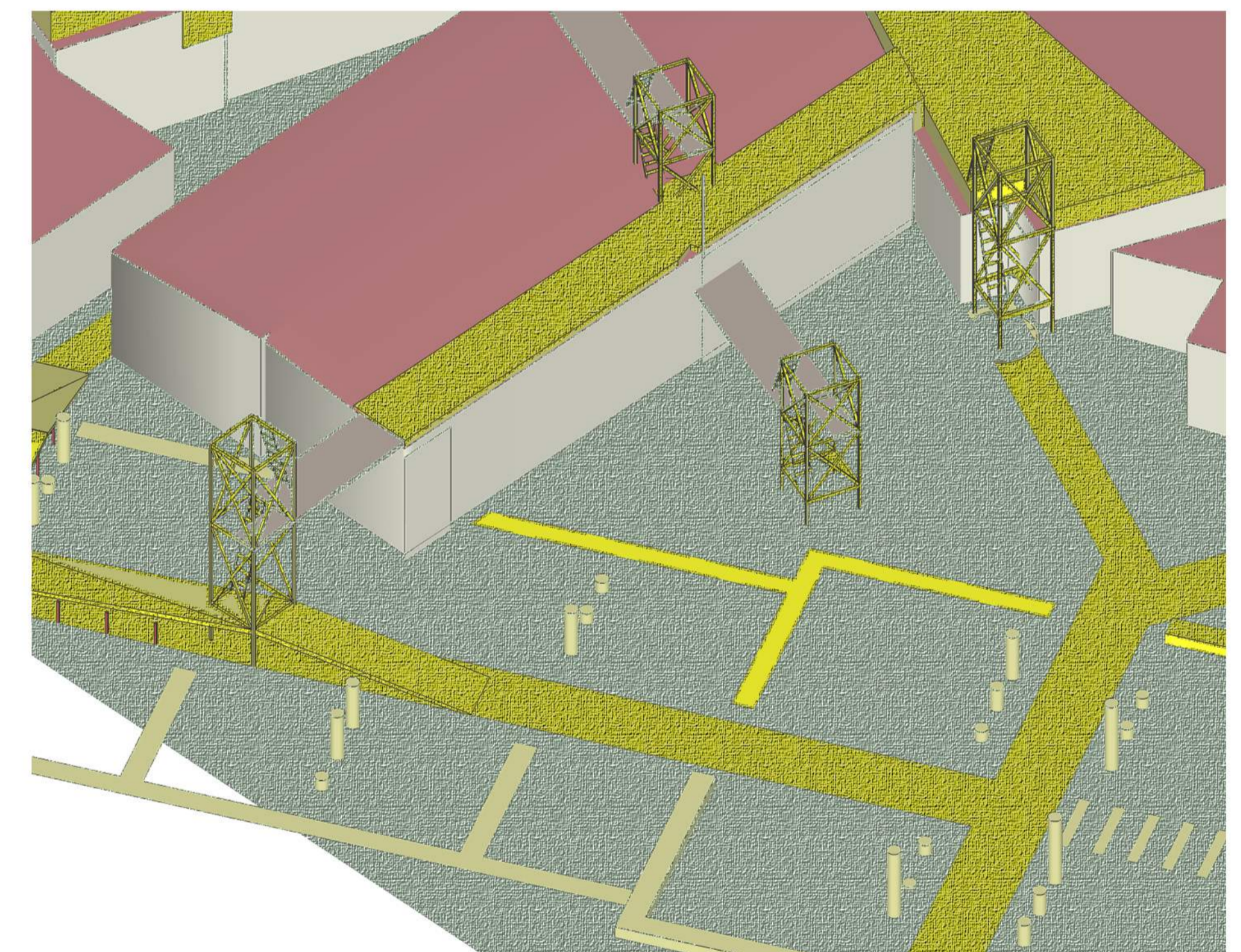
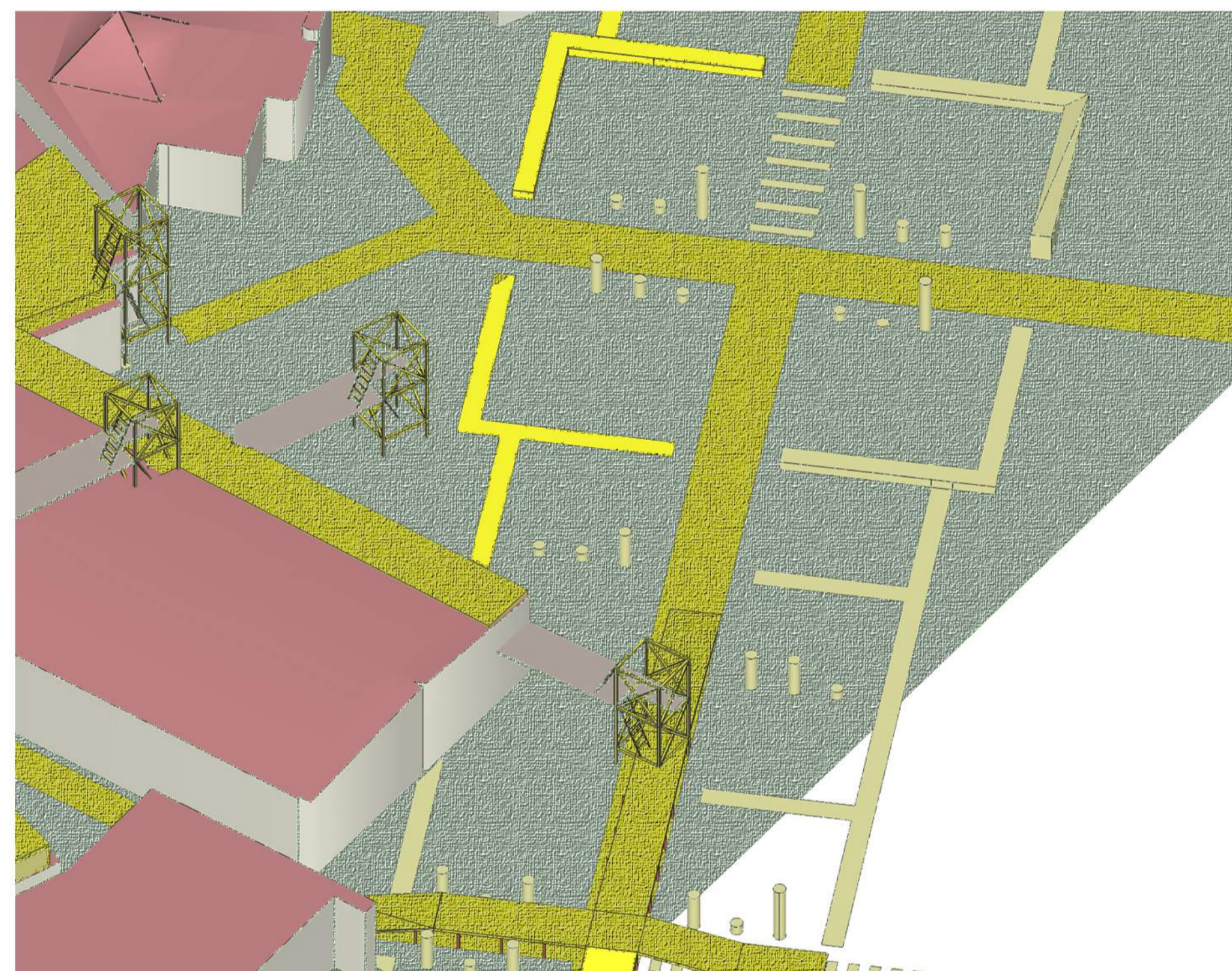
Progress over time (Face 2)

Occupation of space by the community



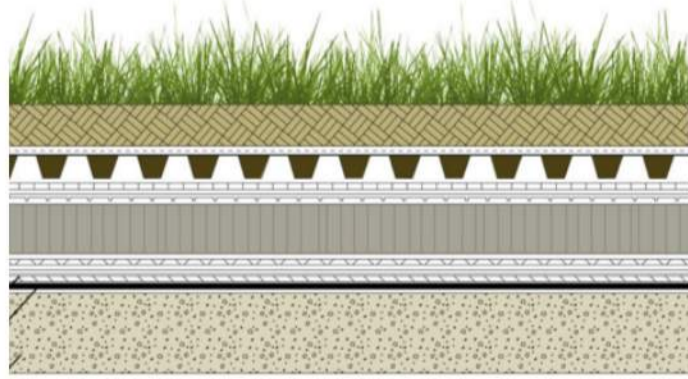
Project over time (Landmark 30+)

Community connection Face 3 - Grid filled by local cooperation



Target views and images

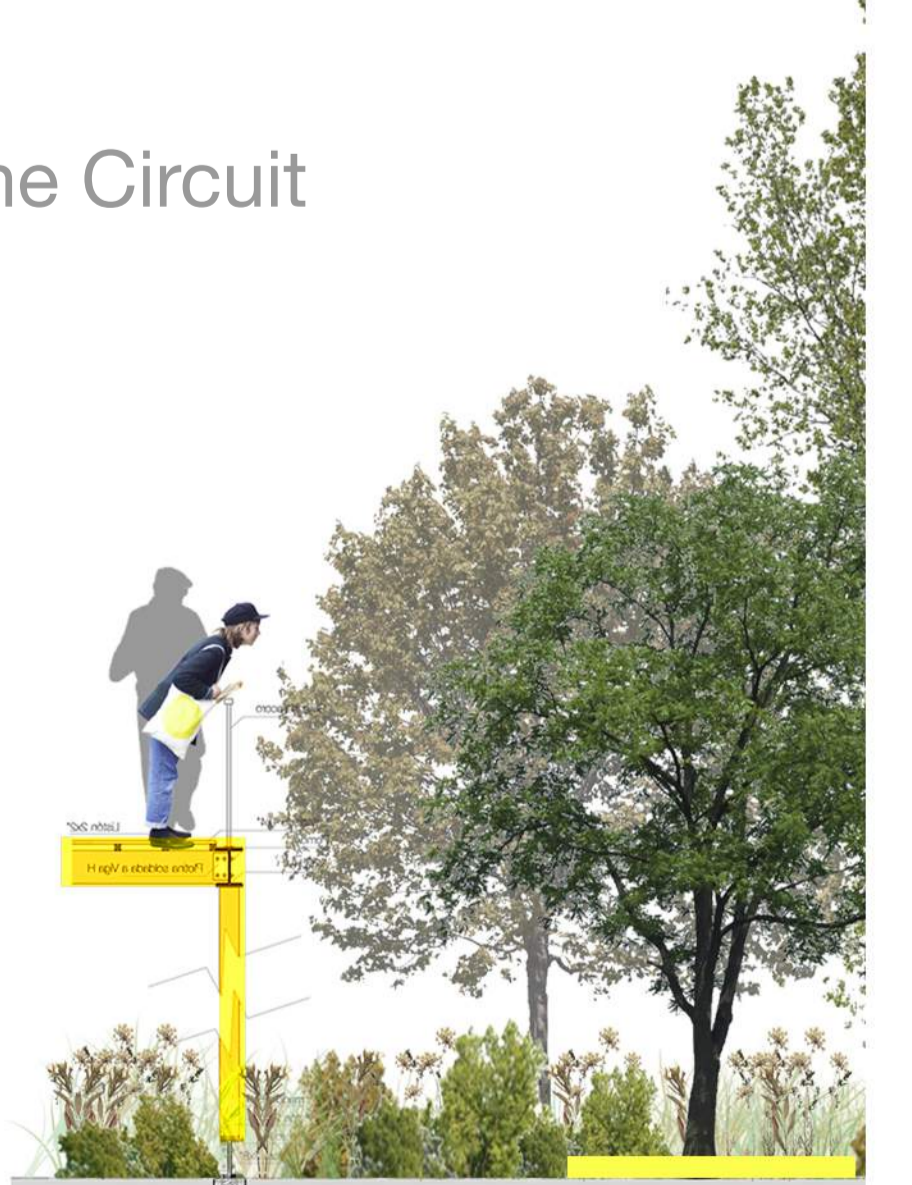
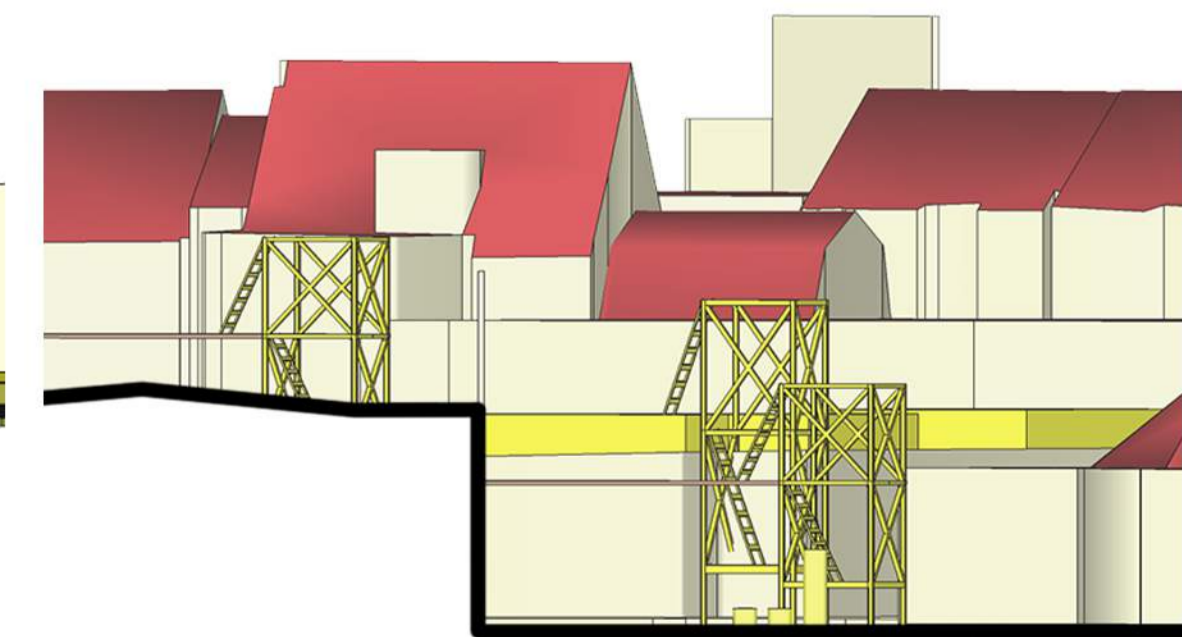
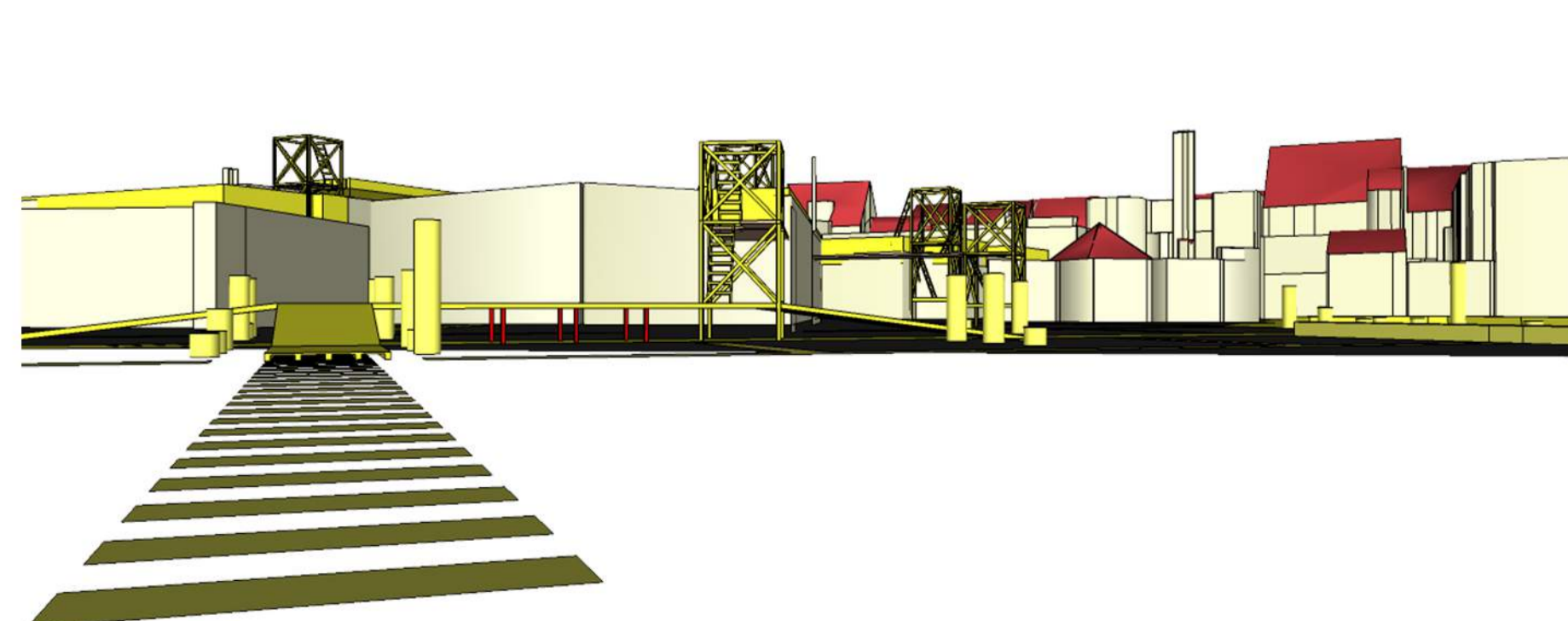
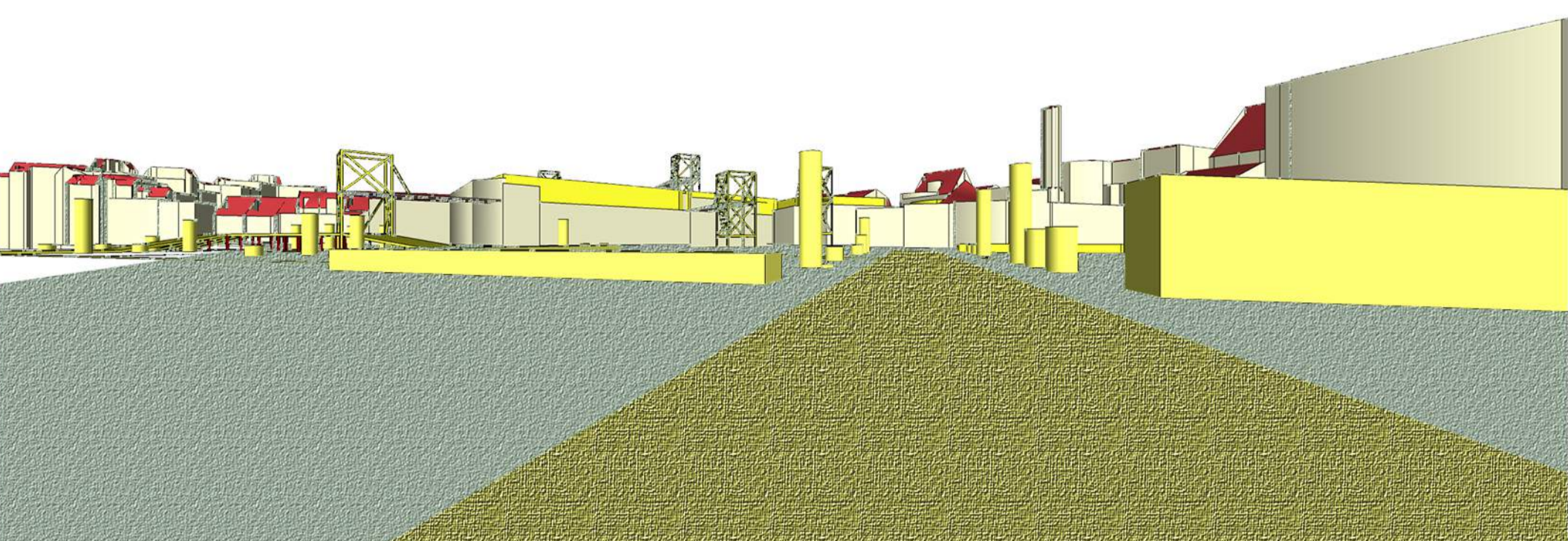
Yellow Landmark



Structure Detail

A single platform that has different levels and allows different perspectives of the square.

In this way I seek to reactivate the Circuit and identity



International Workshop - SURD

LIMBURG - HEERLEN - MEMORY AND IDENTITY

Revitalization of the urban fabric through the enhancement of the Place Memory

06 // YELLOW GRID LANDMARK